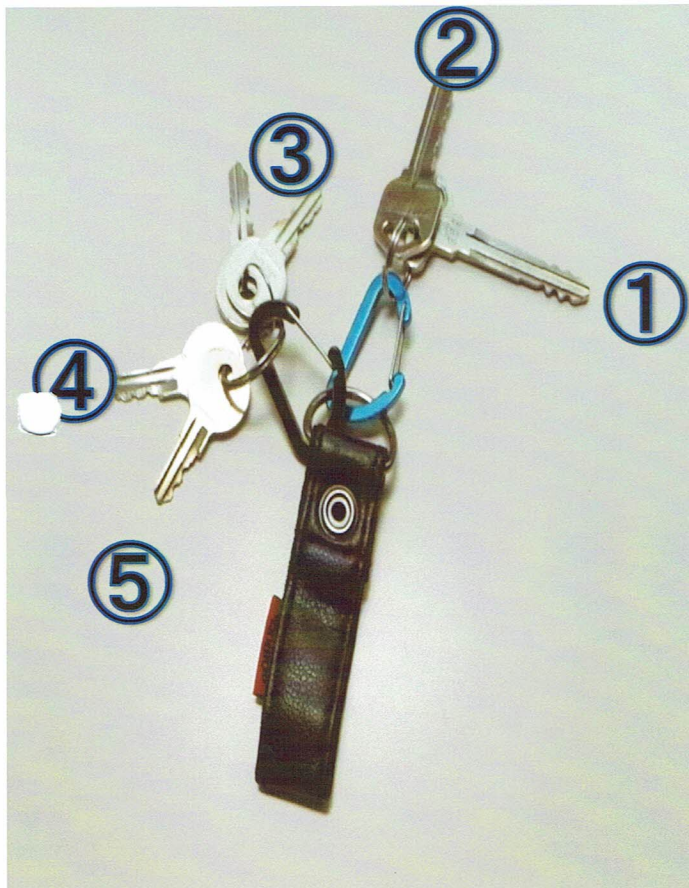


Instruction manual

— ALAMO —

Camper rental
Blue Wind Story

Key



- ① Engine key,
key to the left and the right front doors,
and fuel cap key
- ② key to the entrance door (the left door)
- ③ key to the door of the drainage tank,
key to the door of the rear luggage,
key to the door of the battery
compartment (2 keys each)
- ④ key to the door of the clean water tank
- ⑤ key to the coolant inspection port (gold)

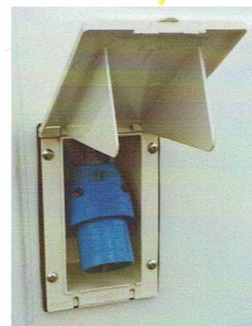
The outside of the vehicle



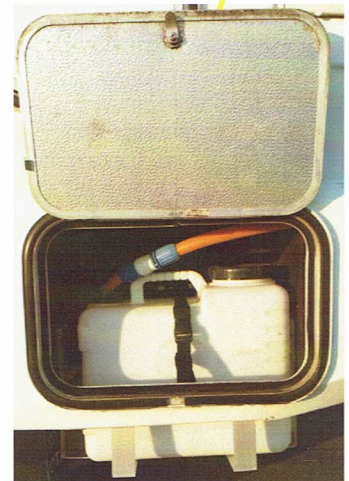
Mirror



Clean water tank,
Umbrella, etc.



External
power
supply



Drainage tank



Rear luggage
compartment



Filler neck

Clean water tank • Drainage tank



The clean water tank and the drainage tank are both located on the left side of the back of the vehicle.



If you want to fill the water tank, remove the band, turn the cap that contains the hose, and take out the tank itself.

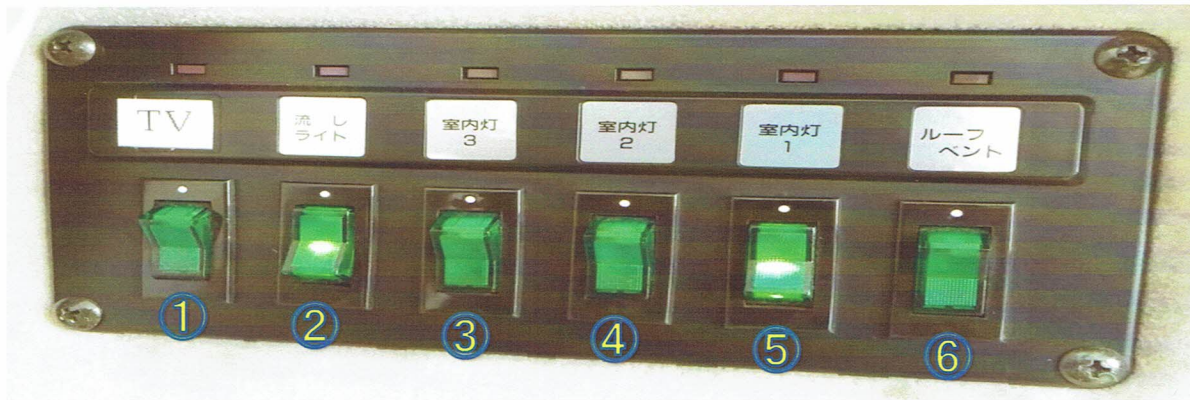
✘ There is no trouble if the pipes with the hose get tangled while closing the cap.



When you want to drain the waste water tank, slide the joint part of the hose, remove the band, and take out the tank itself.

✘ The water tank and the waste water tank hold the same water capacity. You need to be sure to drain the waste water when filling up with clean water.

Switch board



- ① Not in use
- ② Kitchen light
- ③ Top Left Bedroom Light
- ④ Top Right Bedroom Light
- ⑤ Right Living room Light
- ⑥ Ventilation fan



- ⑦ Not in use
- ⑧ Not in use
- ⑨ Left side rear bedroom Light
- ⑩ Right side rear bedroom Light
- ⑪ Water supply pump
- ⑫ Refrigerator



Fuel stove switch

← Turn switch to the right to turn on and adjust temperature.

※It will take a few minutes for warm air to come out.

Room facilities

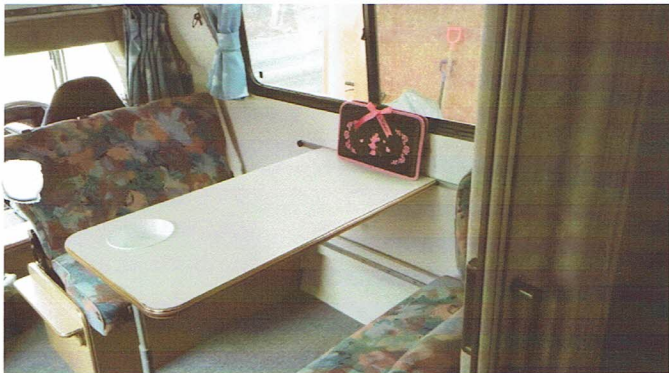


Top bedroom



Table

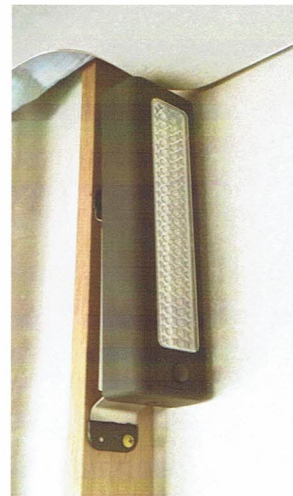
If you want to make the lounge suite into a bed, hold the table legs in half and set to the lower rail.



Shoe box



Refrigerator



LED

LED lights are located on the wall of the rear luggage compartment. They can be removed and used.



Stove burner

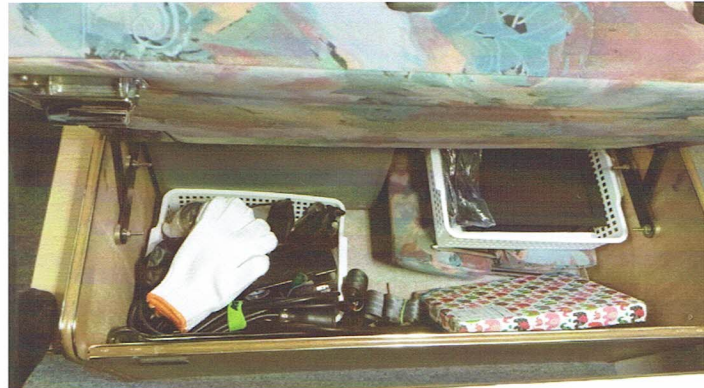
You can ignite by turning the knob and pressing the center button.
Left: off Center: high
Right: low

Sink

Please install and use the drain net. Please do not discard anything solid or hot.

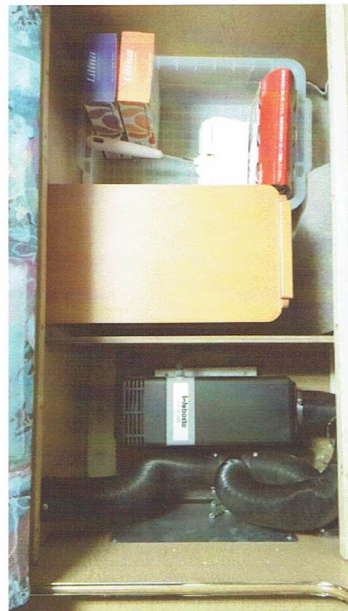
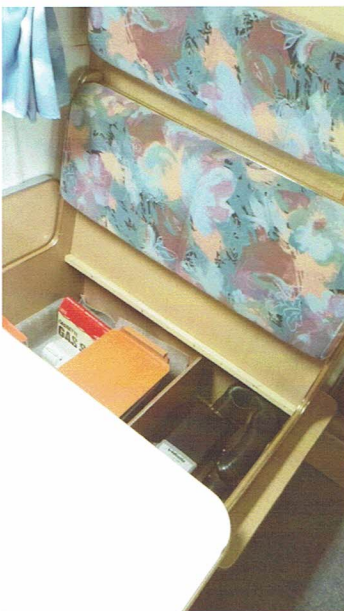


Sofas, in front of and back of the Table, contain the following things:



Sofa in front of the Table

- Important documents / Inspection records
- Portable DVD / One-segment TV
- Triangle display board
- Tool set
- Cable extension
- Cotton work gloves



Sofa in back of the Table

- Spare box tissue
- Spare LPG canister
- Dust roller
- First aid container

***Do not put anything with or near the fuel stove, it is dangerous**

Kitchen ware

- Pot
- Frying pan
- Kettle
- Strainer
- Ladle
- Kitchen knife
- Cutting board
- Kitchen paper
- Wrap
- Aluminum foil
- Plastic dish
- Paper plate
- Bowl
- Disposable chopsticks
- Paper cup
- Can opener/Bottle opener
- Drain net
- Plastic bag
- Salt
- Pepper
- Soy sauce
- Salad oil
- Range guard



LPG (liquefied petroleum gas) is used for the stove

- ※Please shake LPG when the fire is low
- ※To change LPG gas canister, turn the canister to the left, line up the marks, and remove. To replace, line up the marks, turn to the right.

First aid outfit



- Band Aid
- Antiseptic solution
- Thermometer
- Scissors
- Nail clippers
- Cotton Swabs
- Disposable tooth brush
- Sewing kit
- Lighter
- Batteries (AA/AAA)



- Kettle
- cup for rinsing mouth
- Dishcloth



Fire extinguishing spray



- Bucket
- Camera tripod
- Clothesline rope
- External power cord
- Umbrella



Portable DVD / One-segment TV



Repository

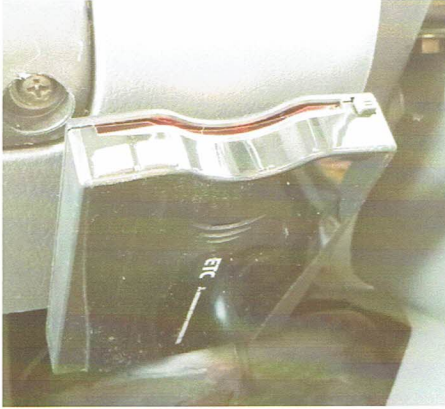


✳ You can plug your cellphone or smartphone in for charging (Turn on the switch below.)

Power source should be taken from the cigarette lighter socket. The antenna will pick up better reception when used outside. (the bottom is magnetic so can be placed anywhere outside easily.)

Equipment around the driver's seat

ETC



The ETC card should be inserted with the top facing bottom. When the light turns green, it is ready.

Drive recorder



The drive recorder automatically starts recording when you start the camper. In case of an accident, unplug the power cord to prevent the recording from being overwritten.

Car navigation system



To use the car navigation system, press and hold the top right button. The power source will still be supplied even if you turn off the engine. To turn off the navigation system, press and hold the top right button.

Audio



CD, radio and USB are available.

Back camera



The power switch is located next to the hazard switch

Things to be aware of when using

- Pull out the key and pull the side brake when you park the camper to ensure safety.
- The height of the camper is 2m90cm. Please check the height clearance when going through tall gates and under entrances of inns and hotels.
- When driving a camper, there are many blind spots. Be extra careful when turning right or backing up.
- The customers are to pay for any damage to the tire and / or repairing a flat.
- The use of the camping solid fuel in the car is prohibited because it is dangerous.
- Smoking is prohibited in the car.
- No outdoor shoes allowed in the car.
- Barbecue or grilled meat should be cooked outside to prevent odors and stains. Please refrain from such meals that might dirty the car.
- Please lock the key of the entrance door while driving.
- When closing the lid to the top bedroom, be sure to lock the right and left sides. Not locking them could cause them to suddenly open and fall causing serious injury.